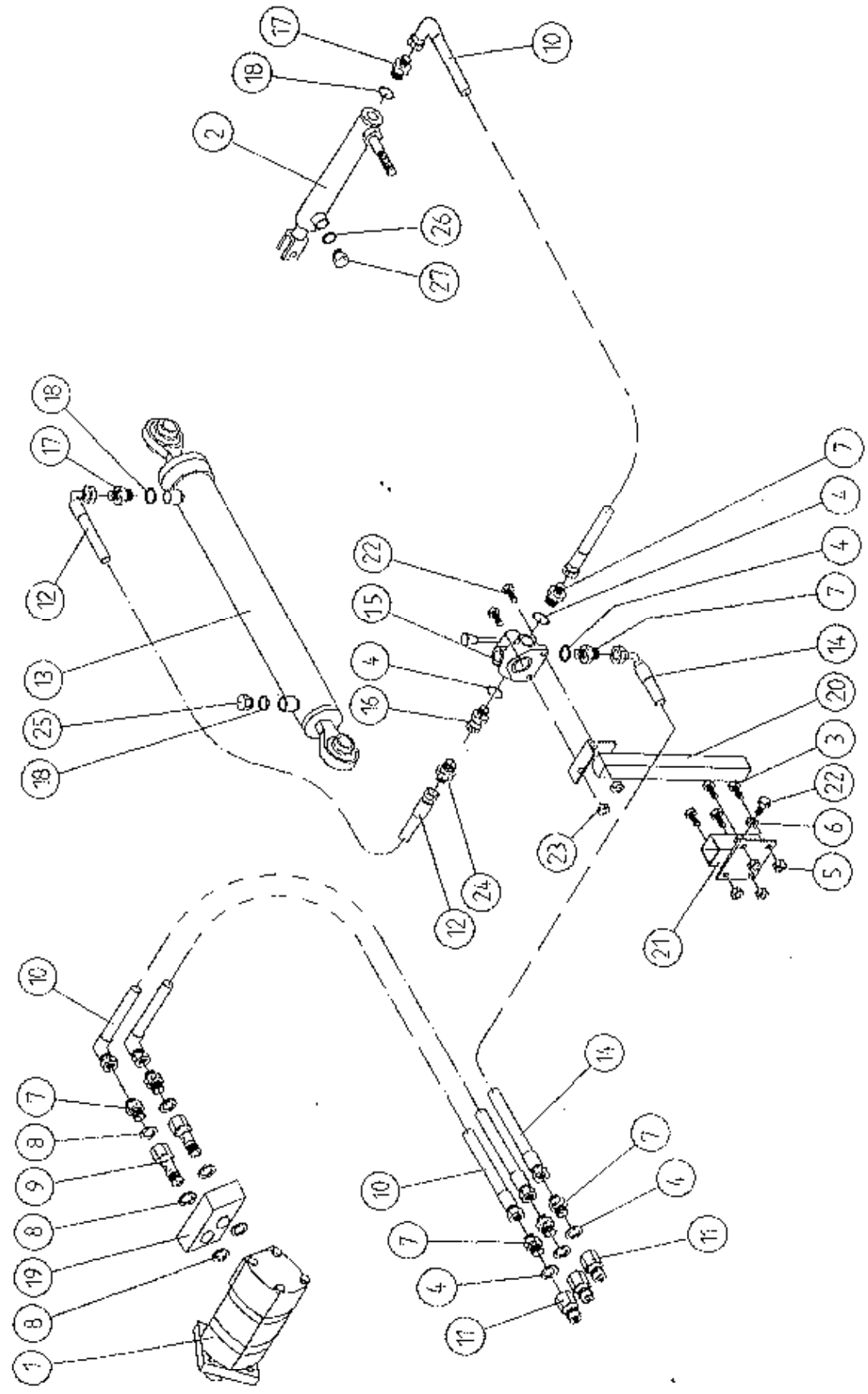


**TANCO 1 TON "CLEANA-FEED"**

**OPERATORS HANDBOOK  
AND  
PARTS LIST  
Wi62-M0196**

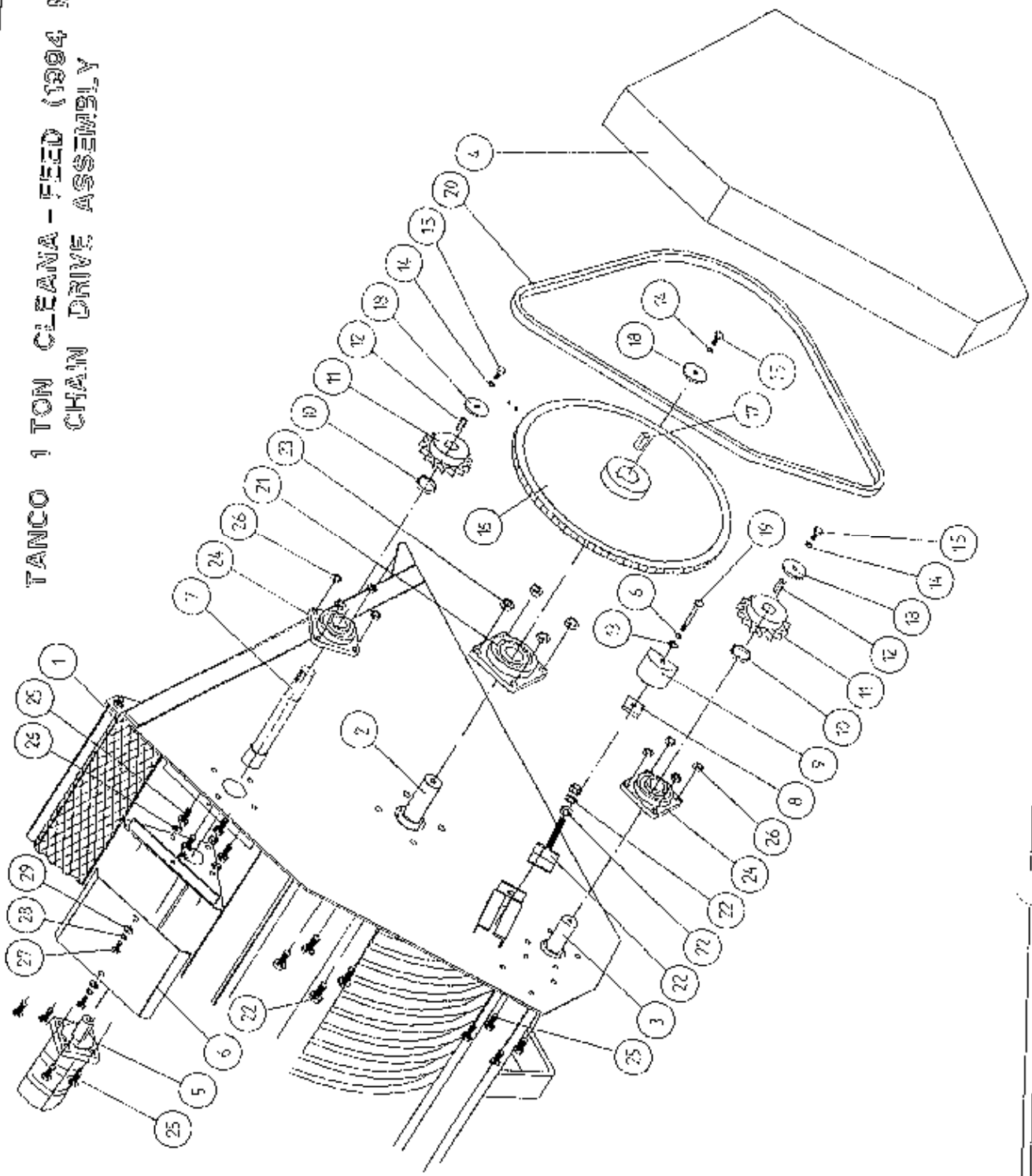
TANCO 1 TON CLEANA - FEED 3 PT LINKAGE MOUNTED  
HYDRAULIC COMPONENTS



TANCO 1 TON CLEANA-FEED 3 POINT LINKAGE MOUNTED  
HYDRAULIC COMPONENTS  
PARTS LIST

ITEM NO	DESCRIPTION	QTY	PART-NO.
1.	CHARLYN HYDRAULIC MOTOR 394	1	Z01-02-RF400
2.	HYDRAULIC CYLINDER	1	Z01-01-AW25
3.	M8 HEX HD BOLT X 30MM LONG	4	Z26-043B
4.	1/2" DOWTY WASHER	7	Z01-04-03
5.	M8 LOCKNUT	4	Z23-08
6.	M10 HEX NUT	1	Z18-10
7.	1/2" MALE X 3/8" MALE ADAPTOR	7	Z01-06-06-08
8.	"O" RING	8	Z01-04-30
9.	7/8" UNF MALE X 1/2" FEMALE BANJO BOLT	2	Z01-03-0031
10.	84" ST/K90 3/8" D/W HOSE	3	Z38-R2-84-S9
11.	1/2" MALE Q/R COUPLING	3	Z01-15-081
12.	60" ST/903/8" C/W HOSE	2	Z38-R2-60-S9
13.	HYDRAULIC TOP LINK	1	Z01-01-TL-162
14.	48" ST/90 3/8" D/W HOSE	2	Z38-R2-48-S9
15.	3 PORT DIVERTER VALVE 1/2" BSP	1	Z01-03-102
16.	1/2" MALE x 3/8" FEMALE ADAPTOR	1	Z01-05-08-06
17.	3/8" x 3/8" MALE / MALE ADAPTOR	2	Z01-06-06-06
18.	3/8" DOWTY WASHER	3	Z01-04-02
19.	CROSS LINE RELIEF VALVE	1	Z01-03-003
20.	DIVERTER VALVE MOUNTING BRACKET	1	WI60-DVMI
21.	SOCKET FOR VALVE MOUNTING BRACKET	1	WI60-SVMI
22.	M10 HEX HD SET X 30MM LONG	1	Z26-062S
23.	M10 LOCKNUT	3	Z23-10
24.	3/8" x 3/8" MALE/MALE ADAPTOR C/W 0.060 RESTRICTOR	2	Z01-03-40
25.	3/8" BSP PLUG	1	Z01-06-MB06
26.	1/4" DOWTY WASHER	1	Z01-04-01
27.	1/4" BSP PLUG	1	Z01-06-MB04

TANCO 1 TON CLEANA - FEED (1994 MODEL)  
 CHAIN DRIVE ASSEMBLY

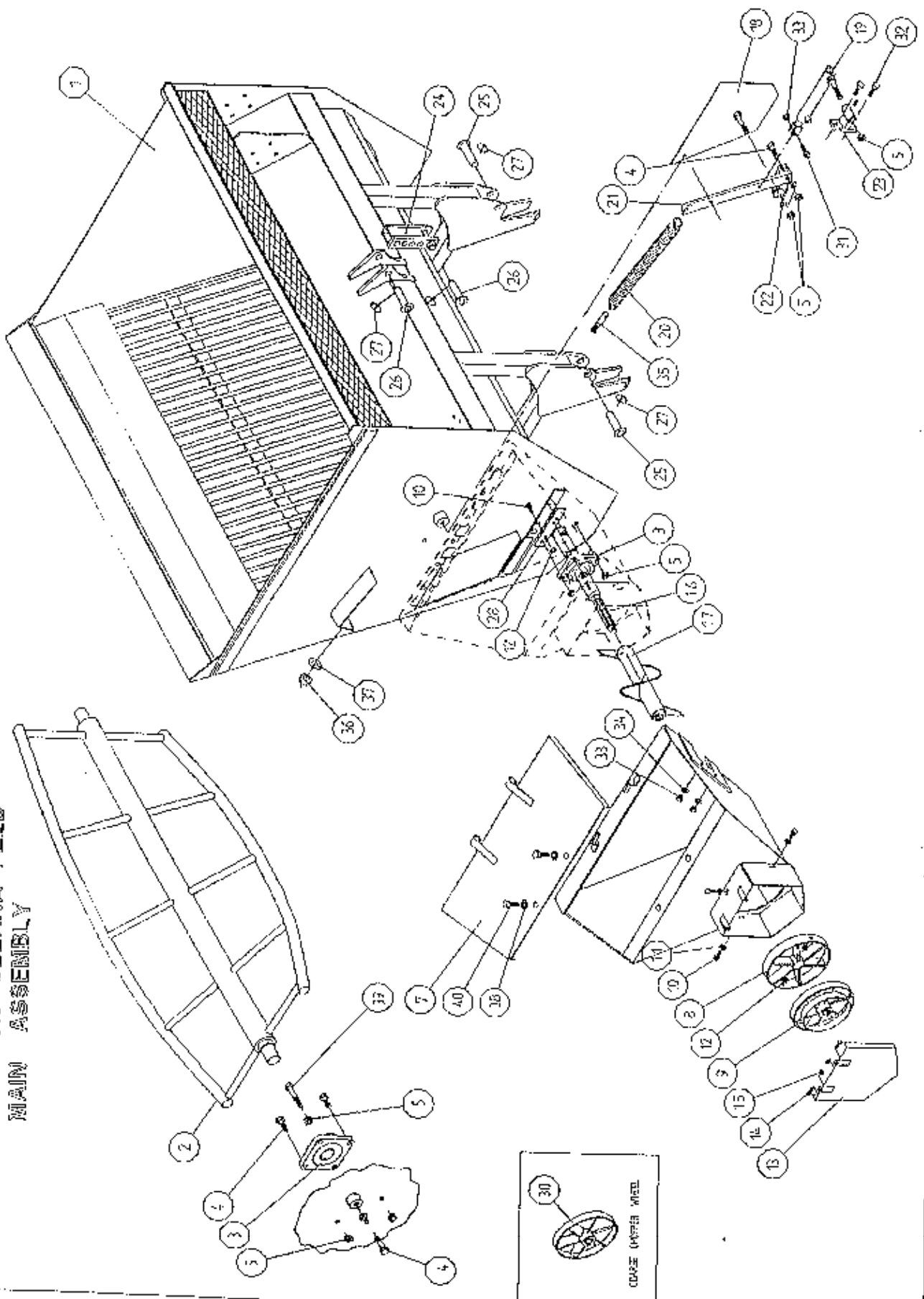



TANCO 1 TON CLEANA-FEED  
CHAIN DRIVE ASSY

PARTS LIST

ITEM NO.	DESCRIPTION	QTY	PART NO.
1.	MAIN FRAME ASSY	1	W162-MF1
2.	AGITATOR (INPUT SHAFT)	1	W162-AGA
3.	AUGER SHAFT	1	W162-ASA
4.	CHAIN GUARD	1	W162-CGA
5.	CHARLYN HYDRAULIC MOTOR <del>W162</del>	1	Z01-02-RF-400
6.	DRIVE SHAFT COVER PLATE	1	W162-DSCP
7.	DRIVE SHAFT	1	W162-DSA
8.	CHAIN TENSIONER LOCKING FLAT	1	W160-094
9.	CHAIN TENSIONER BLOCK	1	W160-107
10.	SPACER	2	W160-092
11.	1" PITCH B.S. SPROCKET 15T 1.5 BORE	2	Z06-160-046S
12.	7/16" SQ KEY X 38 MM LONG	2	W160-KS716
13.	12mm DIA FLAT WASHER	1	Z11-02-121
14.	10mm SPRING WASHER	3	Z12-02-10
15.	M10 HEX HD SET X 25MM	3	Z27-061S
16.	76 TOOTH 1" B.S. TAPER LOCK SPROCKET	1	Z06-161-076
17.	5/8" SQ KEY x 45mm LONG	1	WM55-KS58
18.	LOCKING COLLAR	2	W160-090
19.	M12 H/T HEX HD BOLT X 90MM LONG	1	Z26-091B
20.	1" PITCH BS CHAIN x 72 PITCHES (INCLUDING JOINER LINK)	1	Z09-160
21.	FLANGE BEARING 2" UGF 211E-32	1	Z06-49
22.	M16 H/T HEX. HD. SETS x 45mm LONG	4	W160-100
23.	M16 LOCKNUTS	4	Z23-16
24.	FLANGE BEARING 1.1/2" UCF208E-24	2	Z06-06
25.	M12 HEX HD. SET x 40mm	12	Z26-004S
26.	M12 LOCKNUTS	12	Z23-12
28.	H8 HEX HD SET X 20MM LONG	2	Z26-020S
29.	8MM DIA SPRING WASHER	2	W12-02-08
30.	8MM DIA FLAT WASHER	2	Z11-02-08

**TAYCO 1 TON CLEANA FEED  
MAIN ASSEMBLY**



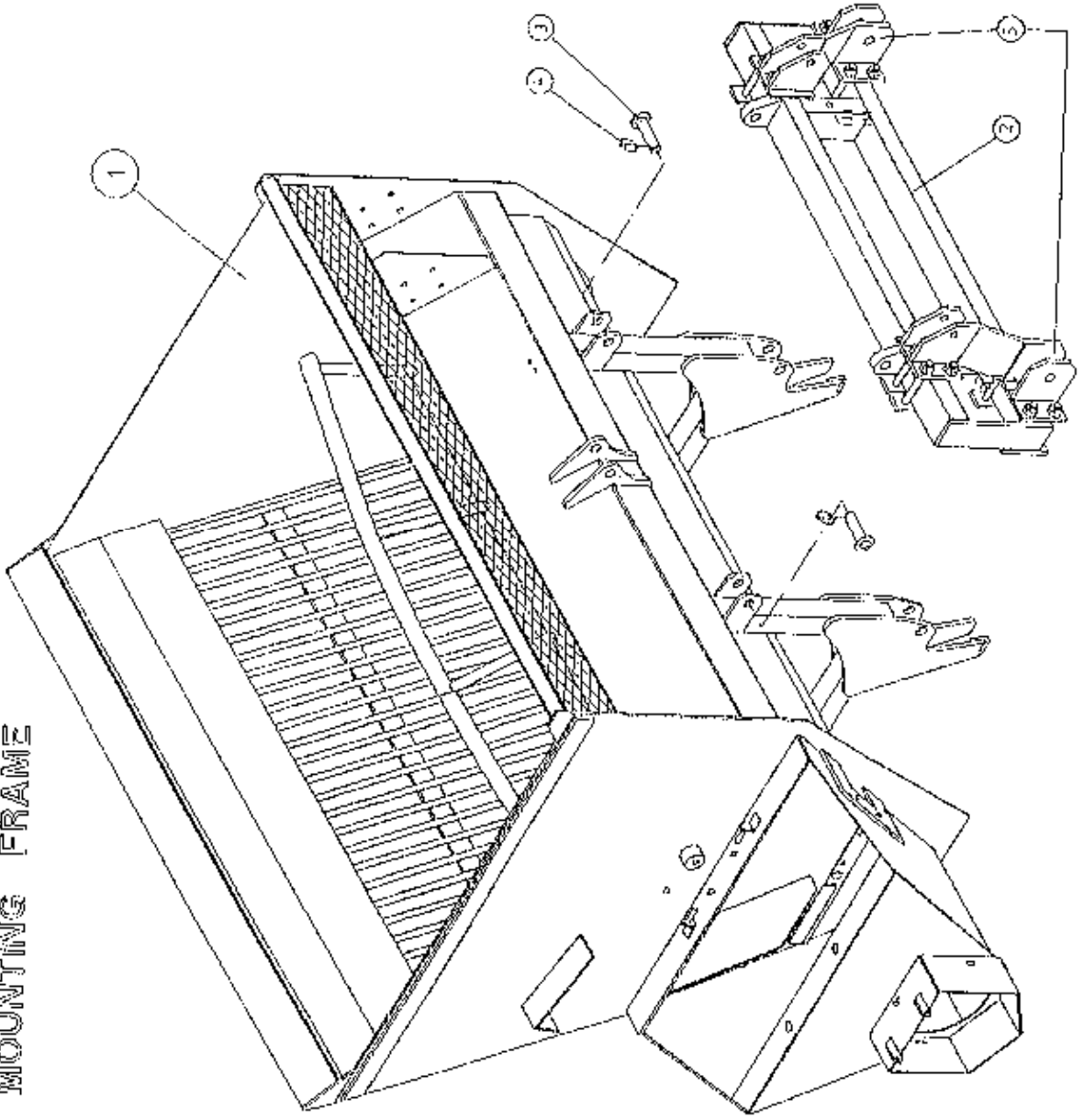
30  
  
 COARSE UPPER WHEEL

TANCO 1 TON CLEANA-FEED  
MAIN ASSEMBLY

PARTS LIST

ITEM NO	DESCRIPTION	QTY	PART NO.
1.	MAIN FRAME ASSY.	1	WI62-MF1
2.	AGITATOR ASSY	1	WI62-AGA
3.	FLANGE BEARING 2" UGT 211E-32	1	Z06-49
4.	M16 HT HEX HD SET X 45MM LONG	5	Z26-1238
5.	M16 LOCKNUT	7	Z23-16
6.	CHOPPER BOX (SHOWN DETACHED FROM MAIN FRAME)	1	
7.	CHOPPER BOX COVER PLATE	1	WI62-CBCP
8.	FIXED WHEEL ASSY	1	WI60-FW1
9.	CHOPPER WHEEL ASSY FINE	1	WI60-CWA
10.	M10 HEX HD SET X 30MM LONG	5	Z26-062S
11.	10MM DIA FLAT WASHER	3	Z11-02-12
12.	M10 LOCKNUT	5	Z23-10
13.	SAFETY FLAP	1	W062-SF
14.	M8 HEX HD SET X 25MM LONG	2	Z06-040S
15.	M8 LOCK NUTS	2	Z23-08
16.	AUGER SHAFT	1	WI62-AGS
17.	AUGER ASSY	1	WI60-AUG
18.	GUILLOTINE DOOR	1	WI62-GO
19.	HYDRAULIC RAM	1	Z01-01-AW25
20.	SPRINGS	1	Z07-21
21.	LEVER	1	WI62-800
22.	LINKS	2	WI62-801
23.	MOUNTING BRACKET	1	WD65-FPDB
24.	HYDRAULIC TOP LINK ATTACHMENT BRK	1	WI62-TLBE
25.	BOTTOM LINK PIVOT PIN	2	Z03-01-704
26.	TOP LINK PIN	1	Z03-03-50
27.	5MM LINCH PIN	3	Z03-22-03
28.	GUILLOTINE DOOR RETAINING FLAT	1	WI62-625
29.	REPLACEMENT TIPS (WELD-ON)	15	WI60-014
30.	CHOPPER WHEEL ASSY COARSE	1	WI60-CCWA
31.	M12 HEX HD SET X 40MM LONG	1	Z26-084S
32.	M12 HEX HD SET X 45MM LONG	2	Z26-085S
33.	M12 LOCKNUT	3	Z23-12
34.	12MM DIA FLAT WASHER	2	Z10-02-12
35.	SPRING ADJUSTING PIN	1	Z03-02-67
36.	3/4" UNC HEX NUT	1	Z18-201
37.	20MM FLAT WASHER	1	Z10-02-20
38.	16MM DIA FLAT WASHER	6	Z01-02-16
39.	M16 HEX HD SET X 100MM LONG	1	Z26-132B
40.	M16 HEX HD SET X 35MM LONG	2	Z26-121S

TANCO 2 TON CLEANA FEED  
FRONT LOADER MOUNTING FRAME



61 5 1 0  
3 16 2 3



TANCO 1 TONNE CLEANA-FEED

FRONT MOUNTING FRAME

PARTS LIST

ITEM NO	DESCRIPTION	QTY	PART NO
1.	CLEANA-FEED (COMPLETE)	1	I62
2.	U.G. ATTACHMENT FRAME	1	WI60-UGAF
3.	PINS	2	203-03-54
4.	6mm LINC PINS	2	203-22-03
5.	'U.G.' FRONT MOUNTING BRACKETS	1 SET	See Page No.19

## MOUNTING BRACKET LIST

New brackets are continuously being developed, please contact your Tanco Dealer for current information.

### TANCO 'UG' TYPE MOUNTING BRACKETS

1st September 1989

Loader Model	Bracket	Loader Model	Bracket
Baas VG31	U.G.35	Leyland (Horndraulic)	U.G.12
Bob cat		McConnell 040, 055, 065	
Bomford-Mill Marquis	U.G.77	070E, 080	U.G.30
Master		Maillieux	U.G.45
Brown GB900	U.G.05	Massey Ferguson MF40	U.G.07
Cameron Gardner	U.G.41	MF40 'Vari' Grab	U.G.071
	U.G.15	MF 40 'Slice' Grab	U.G.0
David Brown/Case (not QA)	U.G.06	Massey Ferguson MF75/80	
David Brown QD90 (not QA)	U.G.061	85/875/880	U.G.08
Dyna	U.G.09	MF50/50B (not Q.A.)	U.G.17
Farmhand F9	U.G.14	Massey Ferguson MF 702	U.G.18
Farmhand F10	U.G.22	" " MF 207	U.G.40
Farmhand F11	U.G.19	" " MF 885	U.G.42
Farmhand F12	U.G.20		
Farmhand F12C	U.G.21	Parmiter (Rear)	U.G.71
		Quickie 2030/2560	U.G.02
Fendt Power Loader	U.G.24	Quickie all models of	
Fendt Q.A. loader	U.G.25	'Alo std. Type 3' range	U.G.03
Ford (Horndraulic)	U.G.12	Quickie as above for MK I	
Ford 550/555	U.G.55	bale spear only	U.G.031
Grays Lynkon and GF4	U.G.13	Quickie, Multi Quickie	U.G.04
Gyro 2300/2500	U.G.10	Steel Fab 801/802	U.G.08
Howard Farmhand			
F10, F12, F14, F15, F16	U.G.50	Tanco 968 and 978	U.G.01
International 1001/1002	U.G.05	Tanco 988/800 Series also	
		968/978 Q.A.	U.G.
J.C.B 520	U.G.68	Tanco 1080	U.G.16
J.C.B 2c	U.G.69		
J.C.B 2D/3C	U.G.70	Trima 13/1610B/1510L/	
John Deere 245/248	U.G.96	910/912H/1020/1420	
John Deere 410	U.G.97	1220/1320/1420	U.G.30
Kat 900 Series 10.17	U.G.26	Twose Conquest	U.G.74
Kat 2, 4, 6 series	U.G.27	Veto F10H/F12/F13/F15	U.G.50
Kramer 312/512	U.G.93	Volvo 4200	U.G.90
		Zetor	U.G.94

The manufacturer reserves the right to alter the specification and price of any product without notice. All goods are subject to the seller's standard conditions of sale, copies supplied on request.

## Operating Instructions

1. Manoeuvre tractor so Cleana-Feed faces heap of roots.
2. Close door to chopper box.
3. Fully extend hydraulic top link.
4. Drop lift arms until feeder rests on ground.
5. Reverse tractor briskly into heap of roots and by the combined use of hydraulic top link and lift arms, fill the root feeder.
6. Retract hydraulic top link and raise lift arms to maximum position.
7. Rotate the agitator slowly to level out pile of beet in feeder and to allow loose dirt picked up in loading to drop out. If the beet is not to be washed this agitation can be continued for a few minutes until beet is clean.
8. If beet is to be washed, move tractor to water supply. Connect hose to washer barhose fitting. Turn on water supply and rotate the agitator until beet is sufficiently clean.

Ensure that the dirty water is properly disposed of, as it is a pollutant.

9. To commence feeding, open chopper box door and by operating the (D/A) lever on tractor start agitator rotating. This moves the roots into the chopper box where they are chopped and fed out through the spout on the right hand side of the machine.
10. If the machine stalls while cleaning or feeding, this means the hydraulic relief valve has operated due to overload. The agitator should be reversed a half turn, then forward again. If the machine continues to stall having repeated the above procedure a few times, there is probably a stone in the chopper box.

To remove this, reverse the agitator a half turn, stop tractor engine\*, open the chopper box inspection door and remove the stone. Close the inspection door and re-start.

\* **NOTE:** It is essential that the tractor engine is completely stopped to ensure absolute safety.